



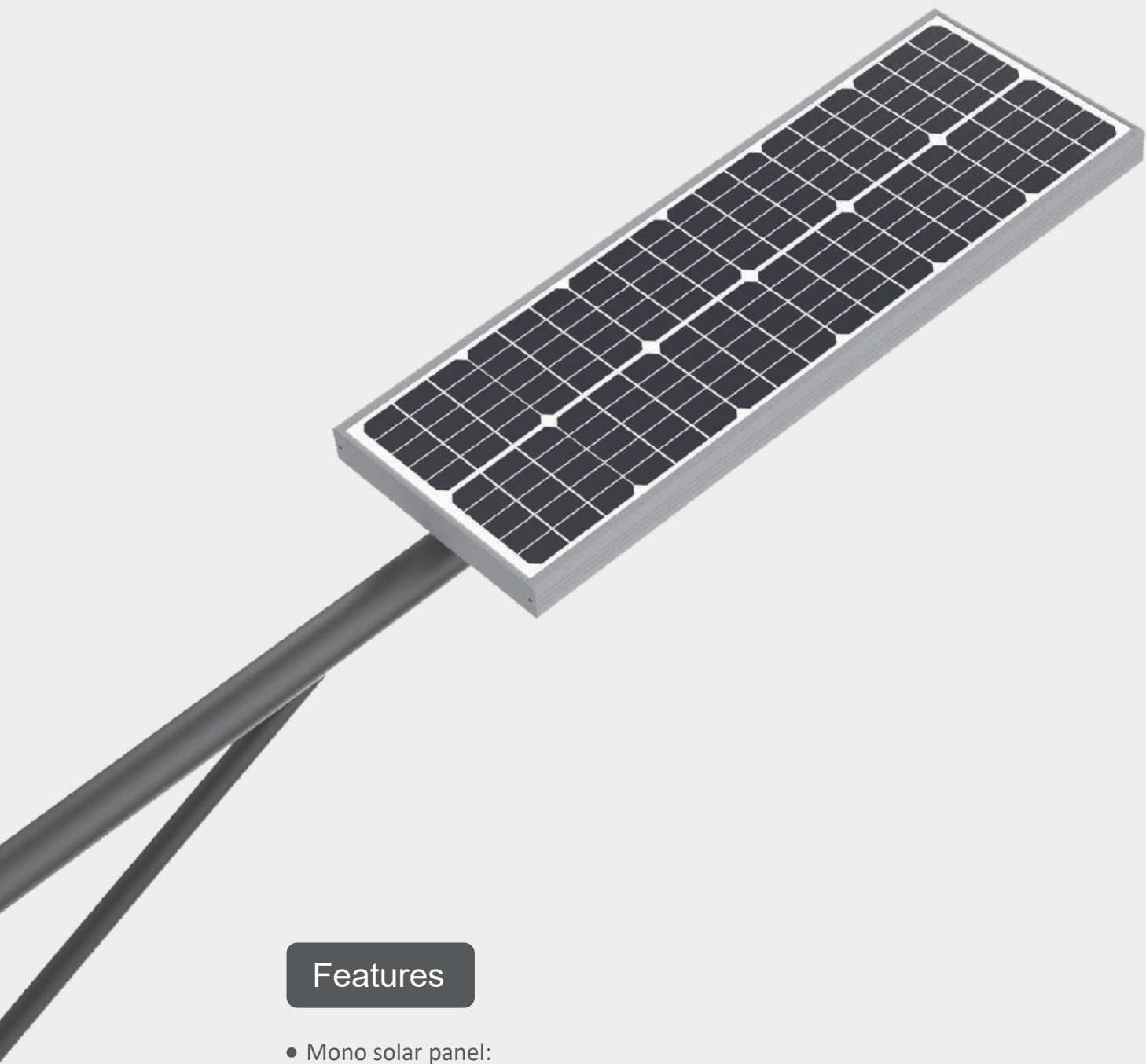
## ALL IN ONE SOLAR LIGHT

DL01A02B01001-300

DAWN INDUSTRY (GROUP) CO.,LTD.  
ZHONGSHAN DAWN LIGHTING  
TECHNOLOGY CO.,LTD

phone: 076087562737  
web: [www.dawnlighting.net](http://www.dawnlighting.net)  
email: [info@dawnlighting.net](mailto:info@dawnlighting.net)

Headquarters: Unit 3401-3402, 34/F Lihe Centre, NO.98 Tongxing Road,  
Guzhen, ZhongShan, Guangdong, 546800, China.  
Factory: No.34 Luosha Industry Avenue, Haizhou, Guzhen,  
Zhongshan, Guangdong, 546800, China.



## Features

- Mono solar panel:
  - the charging efficiency of the mono solar panel will be upto 23%.
- MPPT solar controller:
  - MPPT solar controller has been applied in the Product and allow the charging always keeping at the peak power level.
- High luminous efficiency :
  - Using brand LED with high lumen output, luminous efficacy of luminaire is more than 190lm/w.

### Technical Parameters

Model No	DL01A02B01030-300
----------	-------------------

### Physical parameters

Materials	Aluminum
Manufacturing technique	die casting
Product size	1081 x 458mm
Surface treatment	powder coating
Color	Black / Grey / Customization
IP ratin	IP65
IK rating	IK08

### Optoelectronic parameters

Nominal power	300W
Light source	LED
LED model	3030
LED Qty.	75
Luminous flux	5400lm
Luminous efficacy	>190lm/w
CCT	3000-6500K
CRI	>70
Average beam angle	150°

### Power system parameters

Power source	Solar energy (off grid)
Type of photovoltaic panel	monocrystalline silicon
Peak power of PV	60W
Type of battery	Lithium Iron Phosphate (LiFePO4)
Capacity of battery	384Wh
Solar charging controller	MPPT smart solar controller 5A
Working time	12 hours/day
Atonomy	48 hours
Ambient temperature	-20 C - 75 C
Dimming setting	phase-1: 1 hr 100% on motion, 50% off motion phase-2: 2 hr 80% on motion, 40% off motion phase-3: 3 hr 70% on motion, 35% off motion phase-4: 5 hr 30% on motion, 15% off motion phase-5: 1 hr 50% on motion, 25% off motion

### Applying performance

Recommended mounting height	6m
Recommended road width	7m
Working performance	Everage lux on ground when 100% working:151x Everage lux on ground when 80% working:121x Everage lux on ground when 70% working:111x

### Packing

Packing materials	carton + environmentally friendly EPE
Packing qty.	1 set / carton
Carton size	1135 x 508 x 250mm

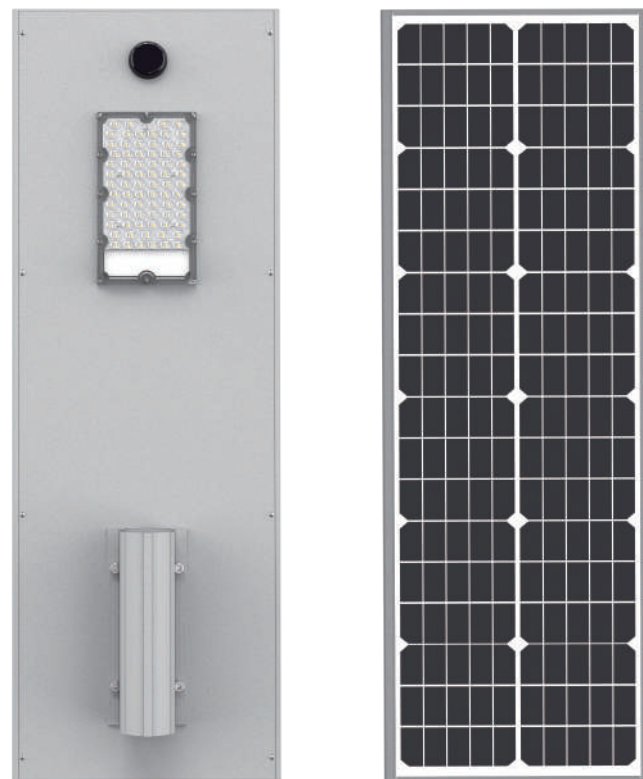
### Warranty

Product designed lifespan	10 years
Warranty	3 years

### Standards

Standards followed	IEC 62471: Photobiological safety of lamps and lamp systems IEC 60598-1: General safety standards for luminaires IEC 61347: Control gear for electric light sources
--------------------	---

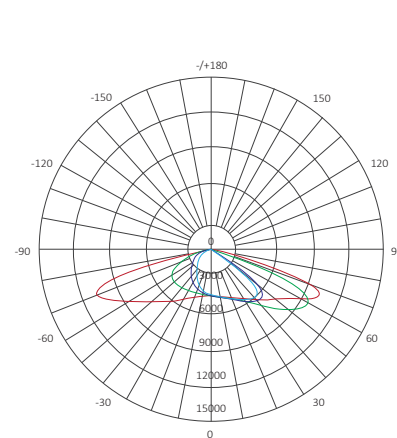
# Product Overview



# Mounting options



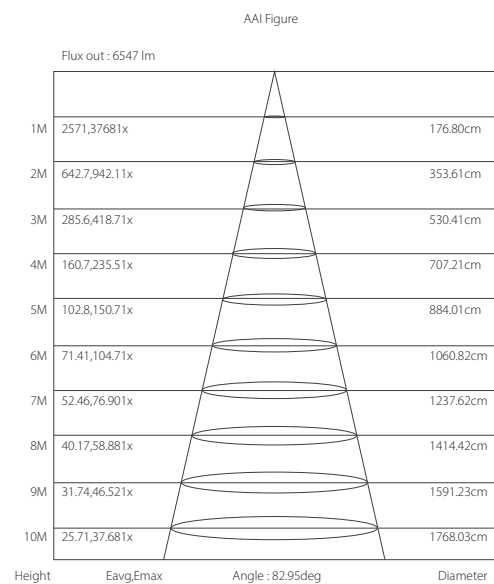
# Luminous Intensity Distribution Diagram



AVERAGE BEAM ANGLE(50%):92.2 DEG

UNIT: cd

C0/180, 157.5 C60/240, 86.7  
C30/210, 41.7 C90/270, 82.9

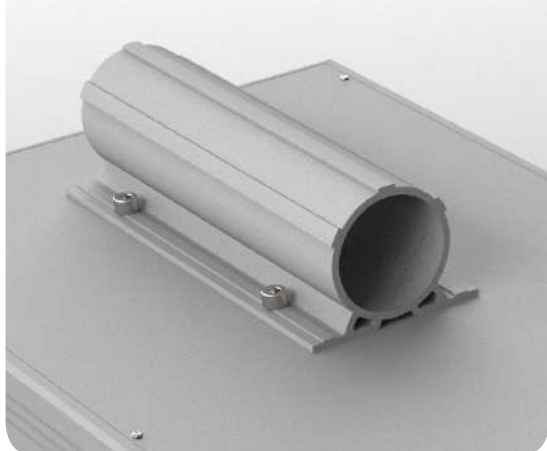


Note : The curves indicate the illuminated area and the average illumination when the luminaire is at different distance.

Bracket : A



Bracket: B



# Flexible mounting design

Flexible mounting kits provide different options to different kinds of mounting needs.

## Product Details



### 3030 SMD chips

75pcs of LUMILEDS 3030 beads provide a high luminous efficiency of 160-200lm/w



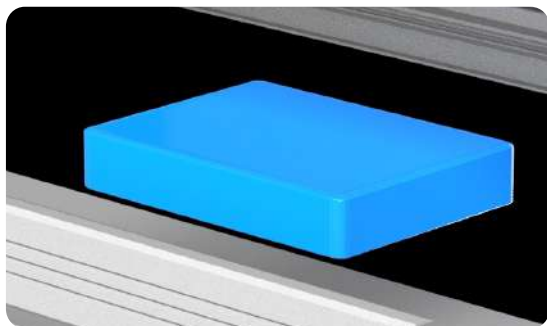
### Solar panels

The overall conversion efficiency is up to 23%.



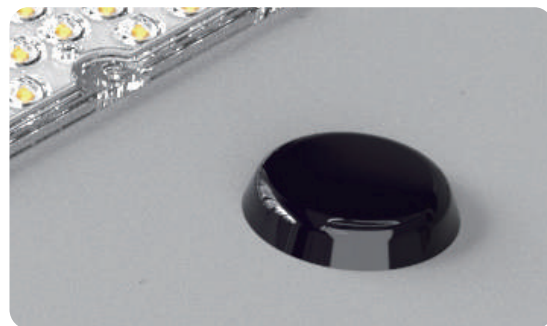
### MPPT solar controller

Maximum power point tracking technology provides the high efficiency in charging.



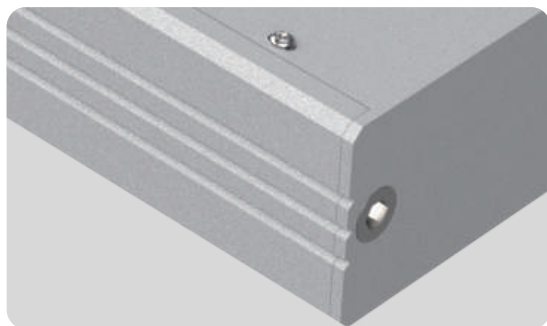
### Brand new LiFePO4 battery

Brand new LiFePO4 battery safety and long lifespan in application.



### Motion sensor

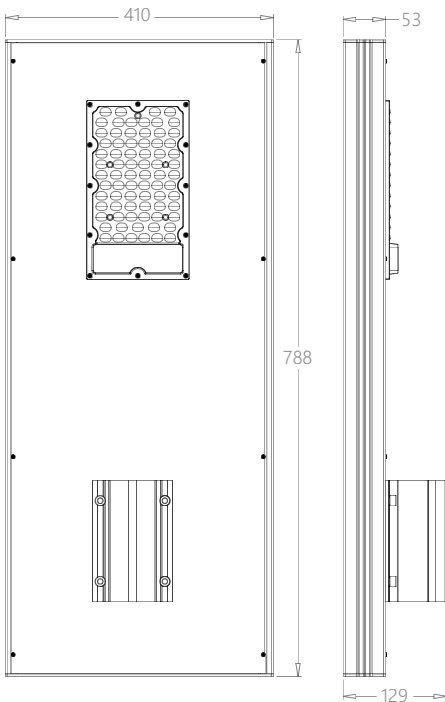
PIR sensor, people closing full power working, people leaving dimming to save energy.



### Aluminum alloy housing

Solid structure, durable in application.

## Product Size



## Packing

### Packaging Information

Packing method	carton
Packing material	cardboard+EPE
Carton capacity	1pc/ctn
Carton size	820*250*65mm
Pallet loading capacity	100pcs/pallet
Pallet size	1000*1000*1700mmH



