

ZHONGSHAN DAWN LIGHTING TECHNOLOGY CO.,LTD

Headquarters: Unit 3401-3402, 34/F Lihe Centre, NO.98 Tongxing Road, Guzhen, ZhongShan, Guangdong, 546800, China.

Factory: No.34 Luosha Industry Avenue, Haizhou, Guzhen, Zhongshan, Guangdong, 546800, China.

[Http://www.dawnlighting.net](http://www.dawnlighting.net)

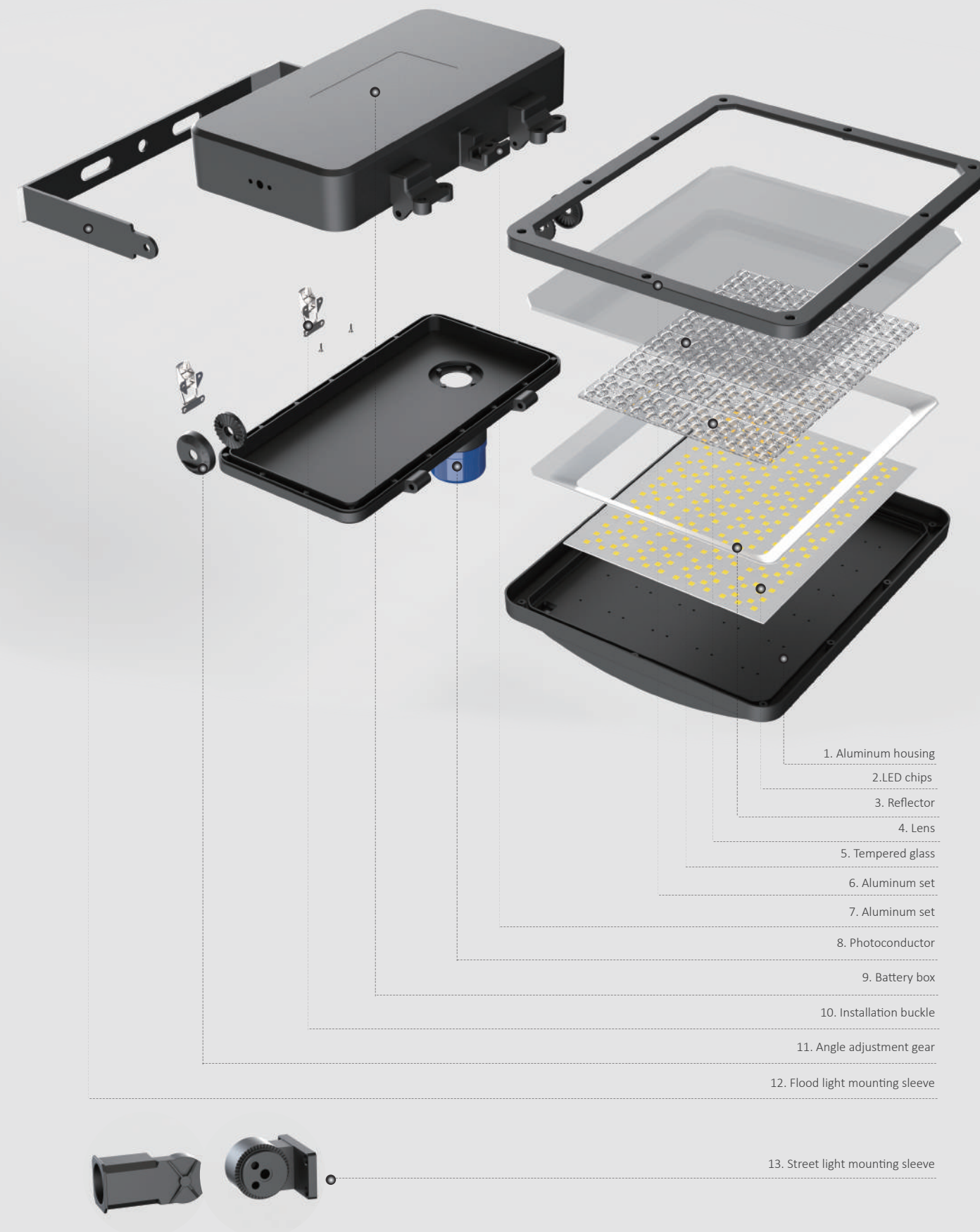
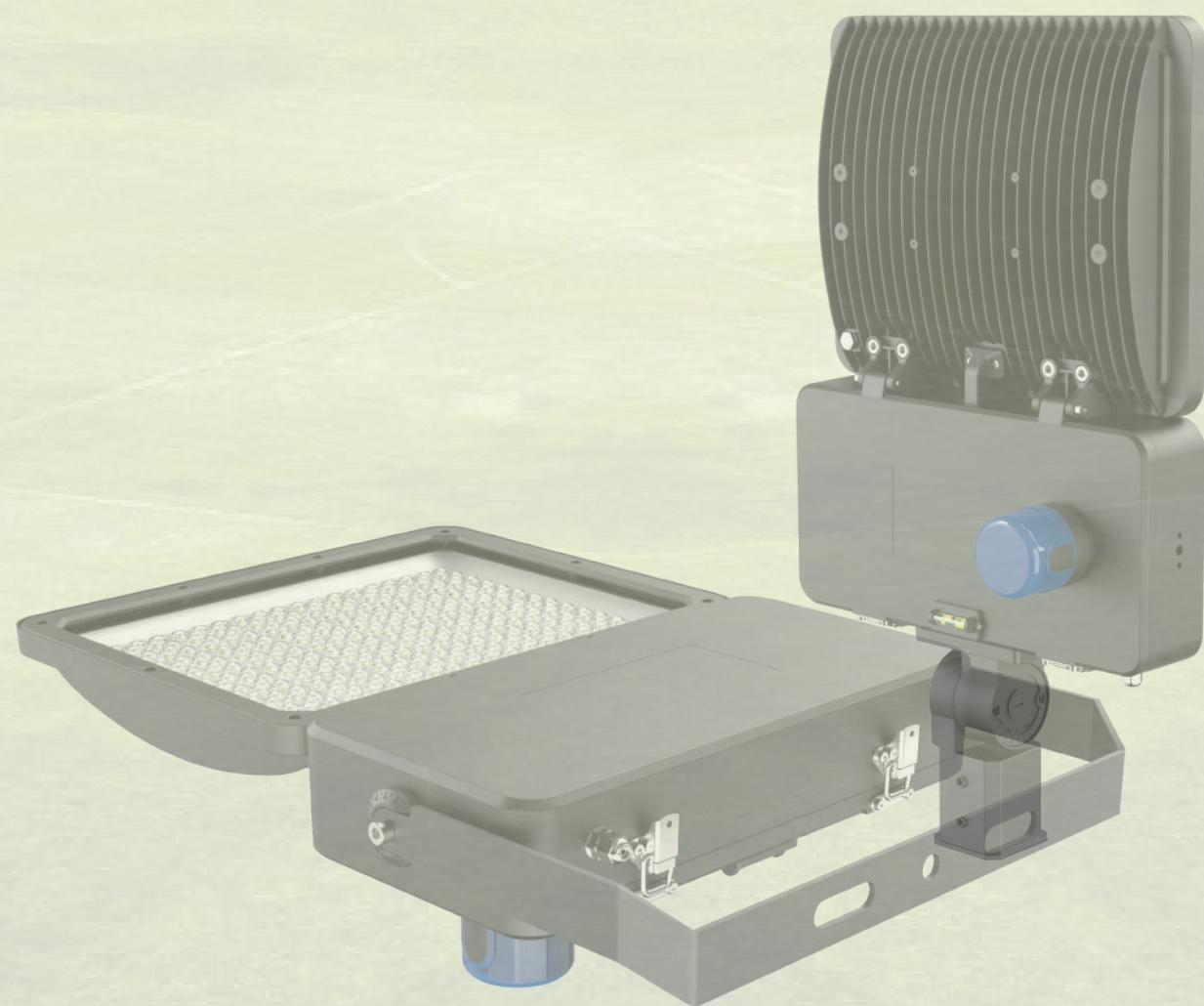
Email: info@dawnlighting.net



LED FLOOD LIGHT

【Features】

1. 160lm/w high level of lighting efficient.
2. High lumen SMD5050 led chip, the penetration rate is 30% stronger than normal chips.
3. The fixture adopts independent split heat dissipation design, can effectively reduce the light decay of the leds.
4. Tool-free disassembly and assembly, operate seperately, easy to maintenance.
5. Rugged die-cast aluminum adjustable bracket that can be horizontal or vertical mounted.
6. Varieties of installation fittings for different applications.





NEMA Socket 3PIN 5PIN 7PIN



Intelligent

Accept ANSI standard dimmable photocells to provide a connection between the photocell and the luminaire.

Available with two or four dimming contacts to support one or two channel dimming protocols.

DALI Control

Luminaires can be controlled by a computer.

1-10V Dimming

Luminance can be divided into 10 level, set it upon your specific needs.

Timer control

We can set the lamp to work at a specific time to save cost.

Solar Compatible

Solar system also happen to provide electric for it to save more energy.

Photocell

The light operating depends on the ambient luminance. When it is dark or dawn, it will lighten with a suitable luminance automatically.

Motion sensor

Automatic dimming when used in combination with 1-10V Built-in adjustable daylight sensor. Widely use in warehouse area.

3030/5050 SMD chips

Light decay of the leds reducing effectively



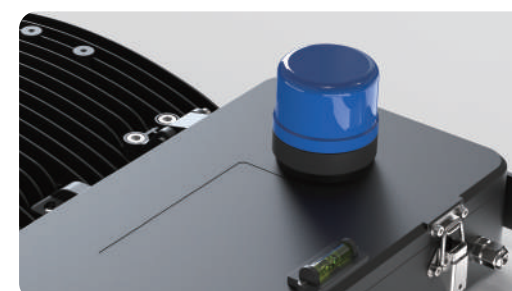
Power box

High efficient power supply cooling, increasing power lifespan



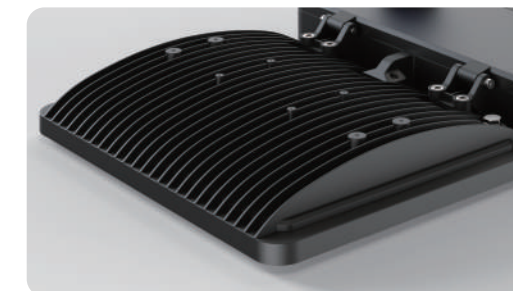
Photocell sensor

Backside of power box support photocell sensor



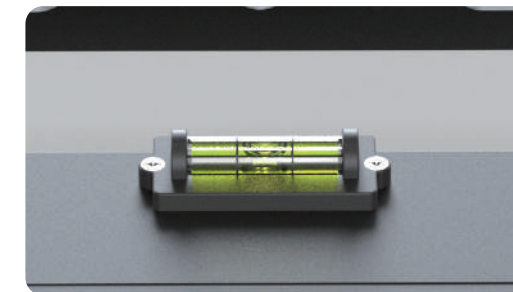
Heat dissipation design

Independent cooling of light source and power supply which will reduce light decay.



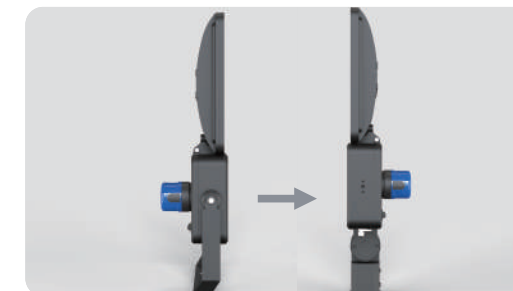
Bubble Level

The level instrument accurates the installation of lamps in one minute

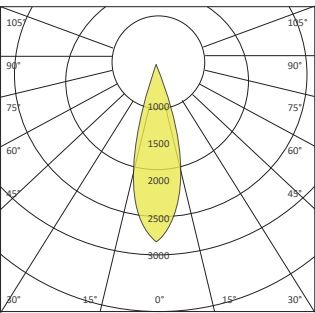


I-II style

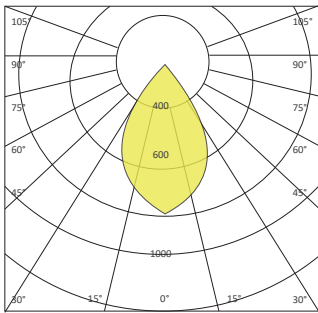
Varieties of installation fittings for different applications



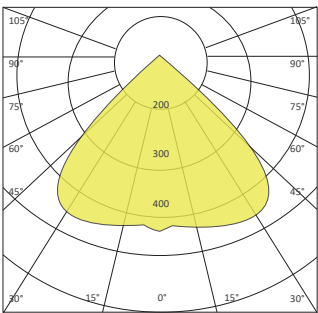
Light Distribution



30 degree

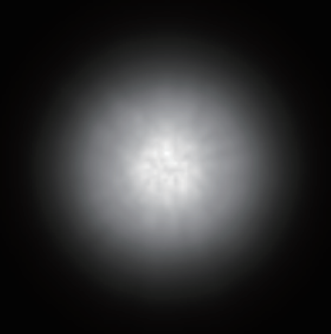
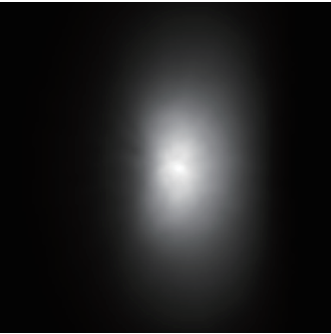
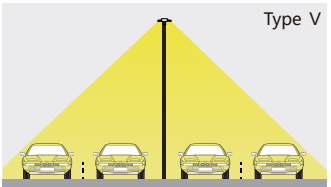
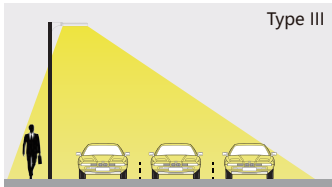
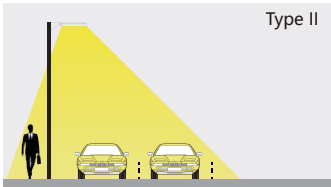
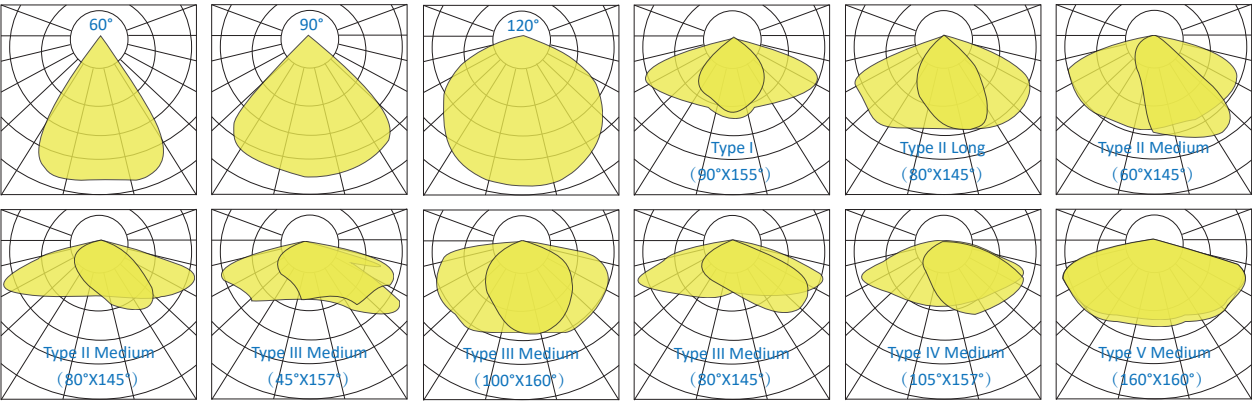


60 degree

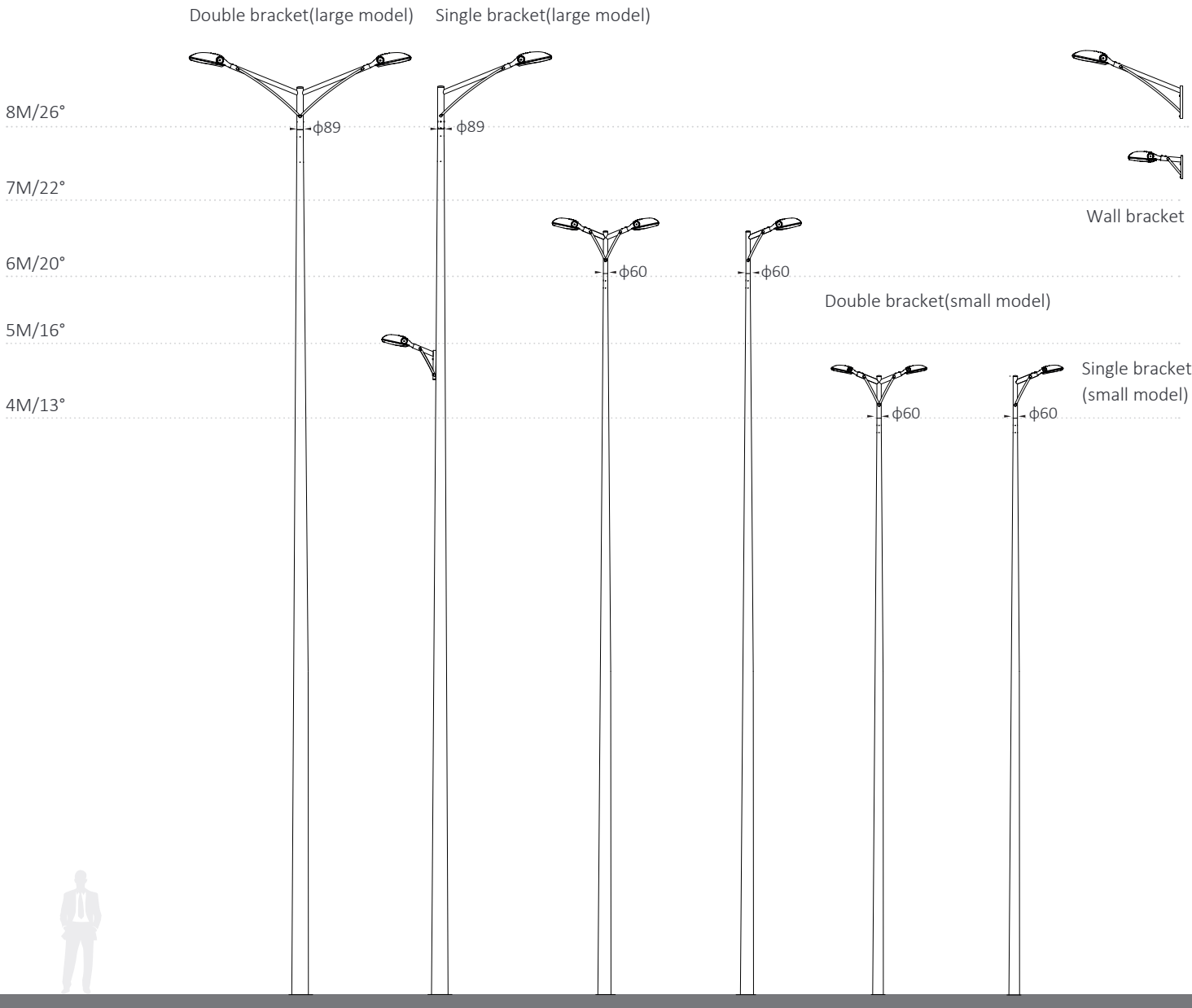


90 degree

More Options



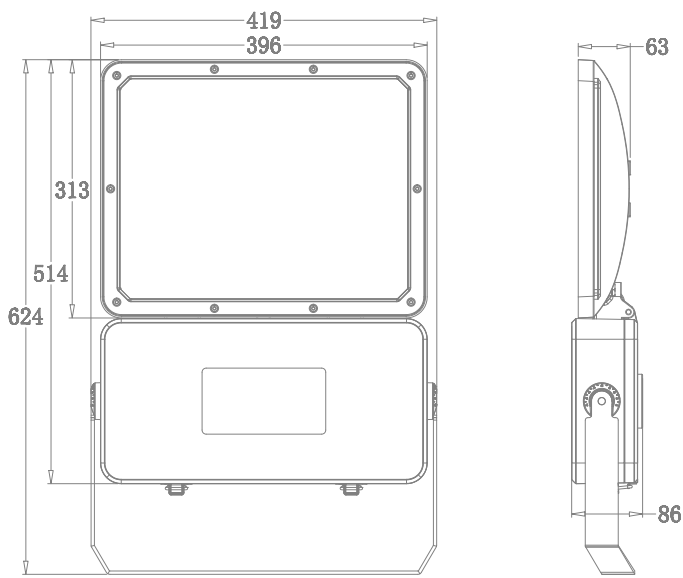
Tekton poles and brackets



Product VIEW :



Product Size :



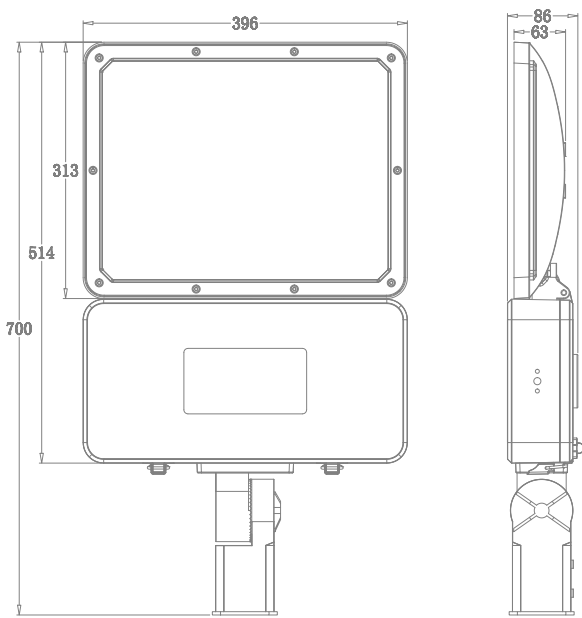
(Unit/mm)

Model No	SKX-TGD-FL24
Power	300W-400W
Input Voltage	AC90-305Vac; 50/60Hz
PF	>0.95
Luminous efficiency	120-180LM/W
LED Chips	Lumileds/CREE/customize
Material	Die-casting Alumilum ADC12
CCT	2700-6500K or Customize
CRI	>70/80
Driver option	Inventronics/Meanwell/customize
Lifetime	50, 000 H
IP Level	IP66

Product VIEW :



Product Size :



(Unit/mm)

Model No	SKX-TGD-ST24
Power	300W-400W
Input Voltage	AC90-305Vac; 50/60Hz
PF	>0.95
Luminous efficiency	120-180LM/W
LED Chips	Lumileds/CREE/customize
Material	Die-casting Alumilum ADC12
CCT	2700-6500K or Customize
CRI	>70/80
Driver option	Inventronics/Meanwell/customize
Lifetime	50, 000 H
IP Level	IP66



