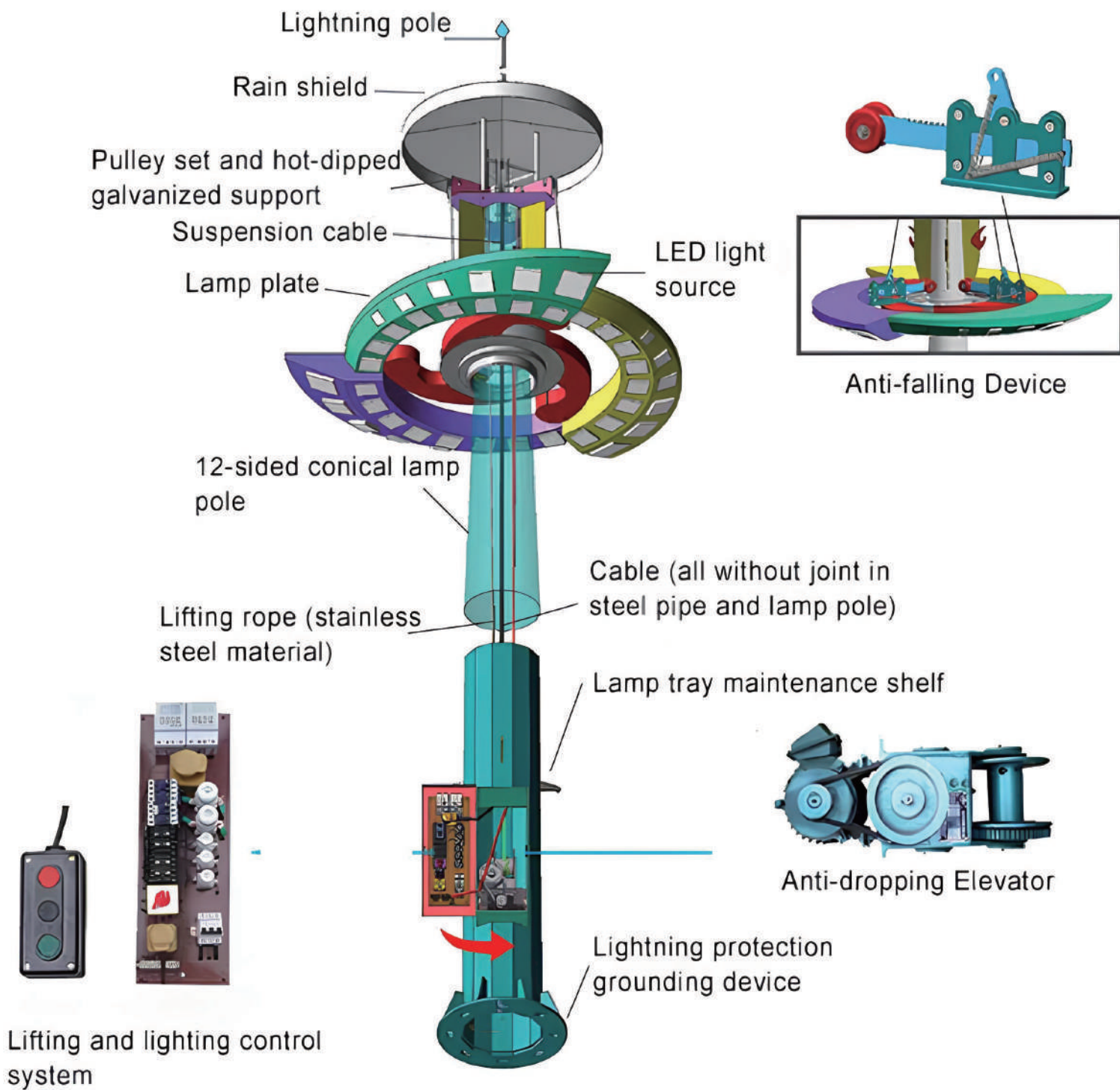
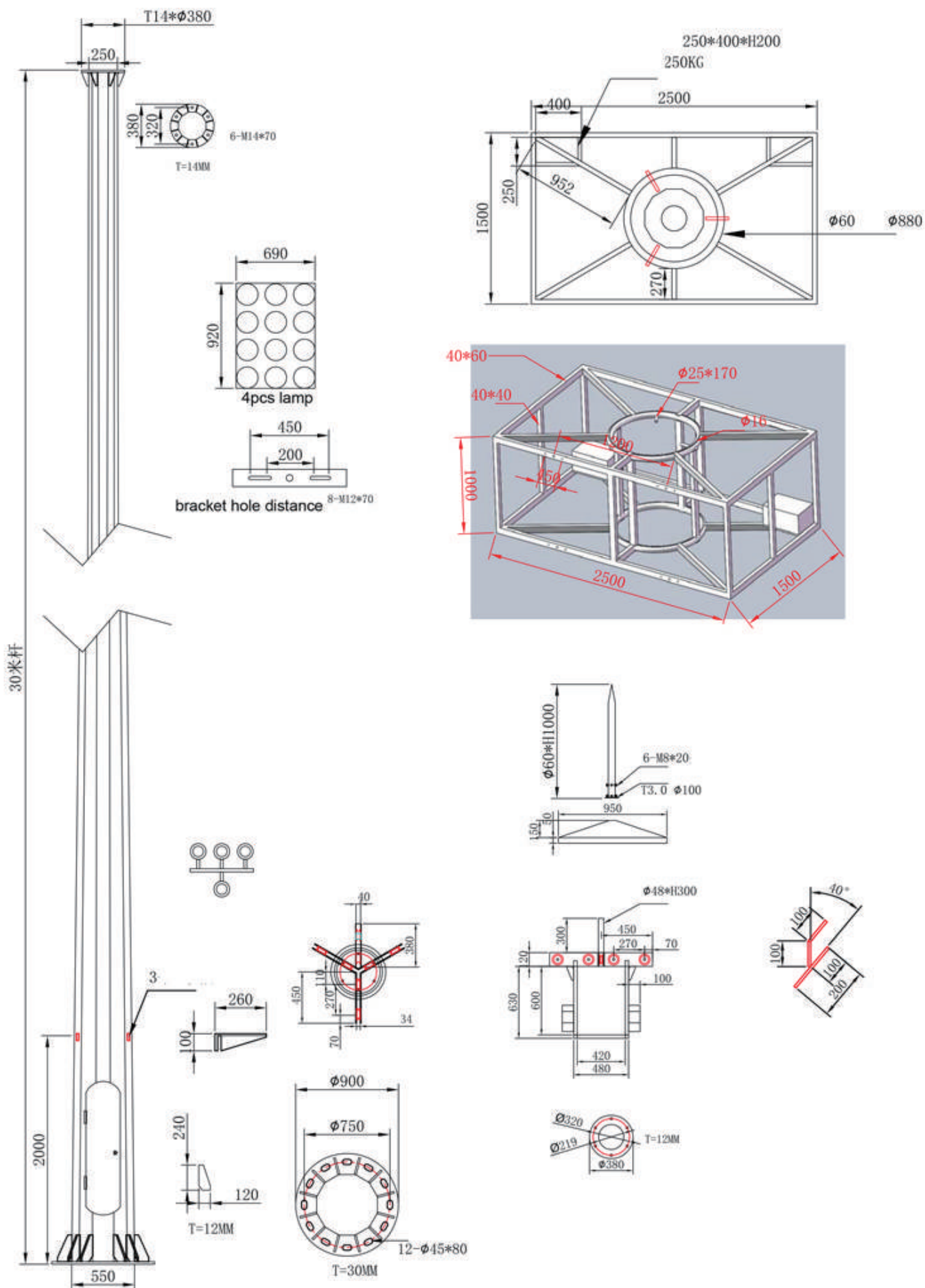
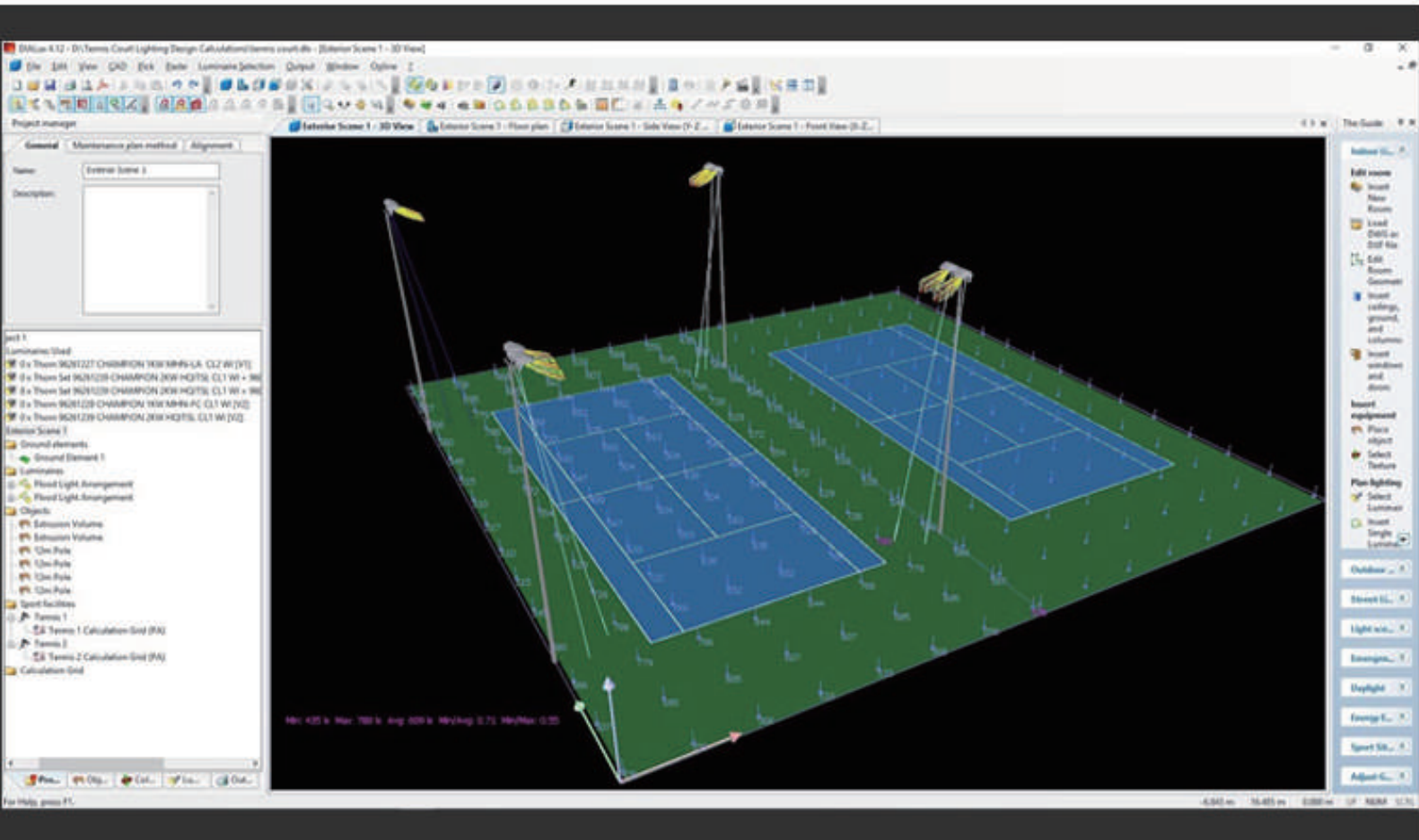


HIGHT MAST POLE LIGHT



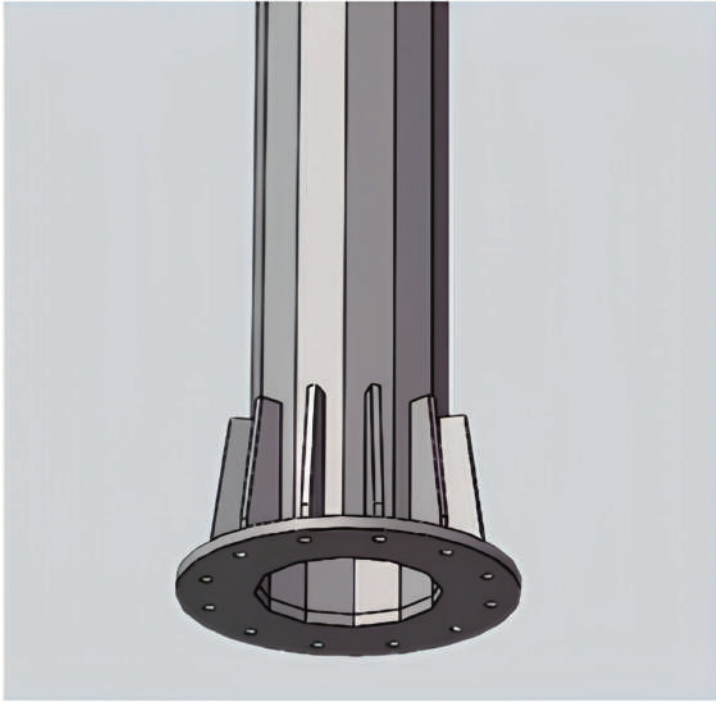




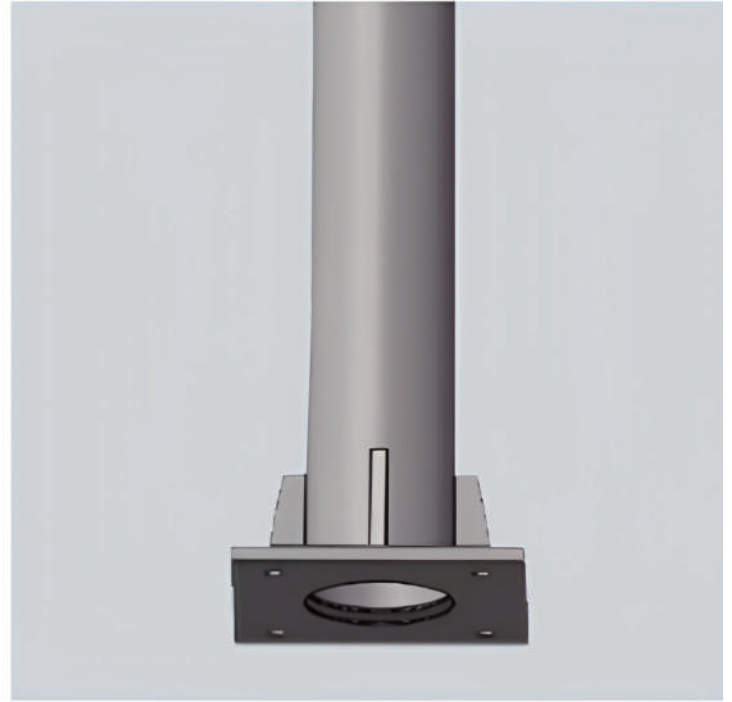


LED Flood lights for all kinds of venues:

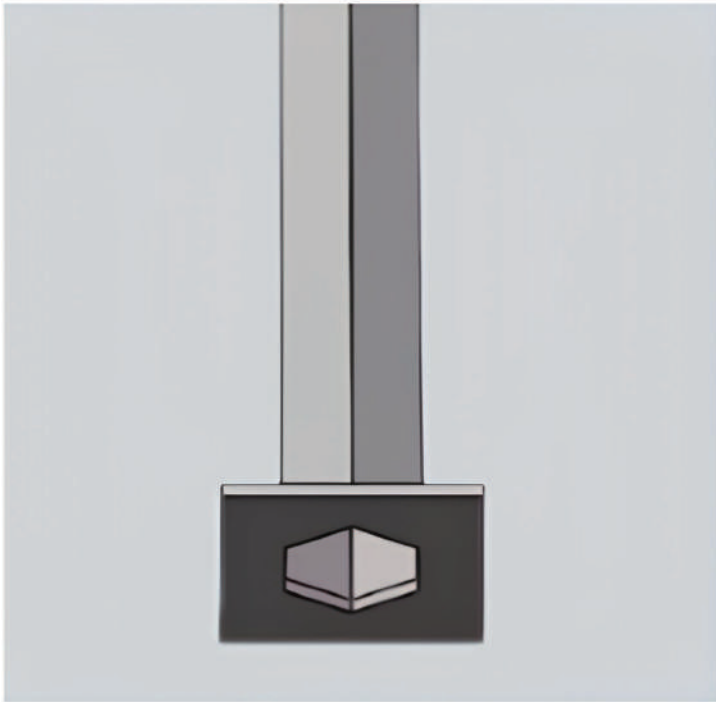




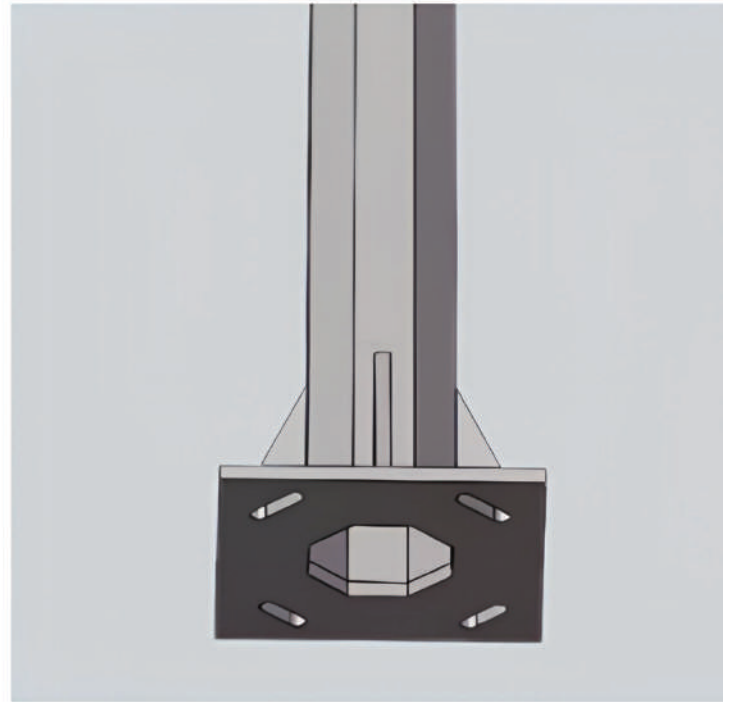
POLYGONAL



CONICAL



HEXAGONAL



OCTAGONAL



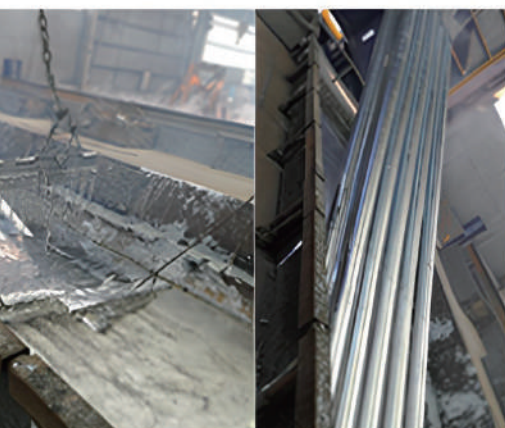
Raw material cutting machine



Lamp pole bending machine



Automatic welding production line



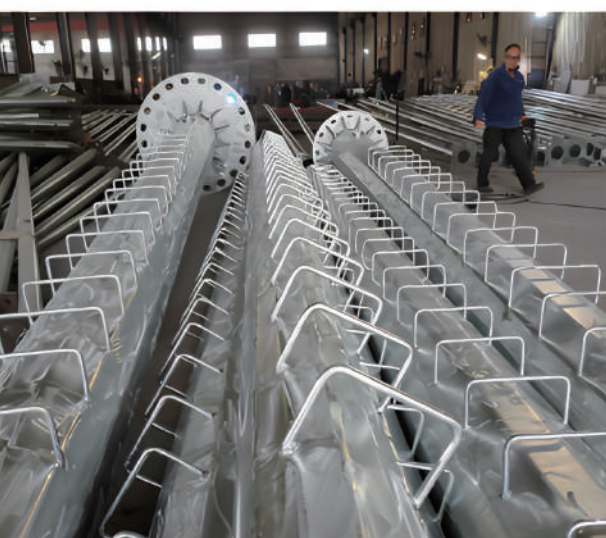
Hot-dipped galvanized



Polishing



Powder painting



finished product



01

DIE-CASTING ALUMINIUM LAMP

Sodium lamp/led module lamp are available;
With anti-oxidation and anti-corrosion advantage;



02

MATERIAL

Material of lighting column used:
Chinese steel Q235, Q345.



03

WELDING

Welding process for lighting column comply with BS EN 1011-2, AWD1.1.
All welders of us have welder certificate.



04

HOT DIPPED GALVANIZED

Hot dip galvanizing process for lighting column comply with BS EN ISO 1461 / BS729. Average thickness is at 100 micron.



05

BRACING PLATE

Sturdy and durable to avoid fading and rusting caused by long-term sunshine and rain.

06

THE RAISING-AND-LOWING SYSTEM

The raising-and-lowering system mainly consists of lighting rod, lighting control cabinet, raising-and-lowering control cabinet and so on.





PRODUCT PACKING

Customized logo on cartons & laser print the logo on the product



