



LED STREET LIGHT



PRODUCT PARAMETERS



MODEL	DLPL-RDL002001	WATTAGE	50-300w
BEAM ANGLE	60-120°	MATERIAL	Die-casting aluminum
LUMENS	100-140lm/w	CCT	3500-6500K
IP RATING	IP66	INPUT VOLTAGE	AC85-265V

PRODUCT DETAILS



140lm/w LED MODULES

Each independent module 30-80w;
Flexible extending/ customization;
Good heat dissipation performance.

DIE- CASTING ALUMINUM HOUSING

High-quality aluminum,
not easy to rust, deform and oxidize.



HIGH QUALITY DRIVER

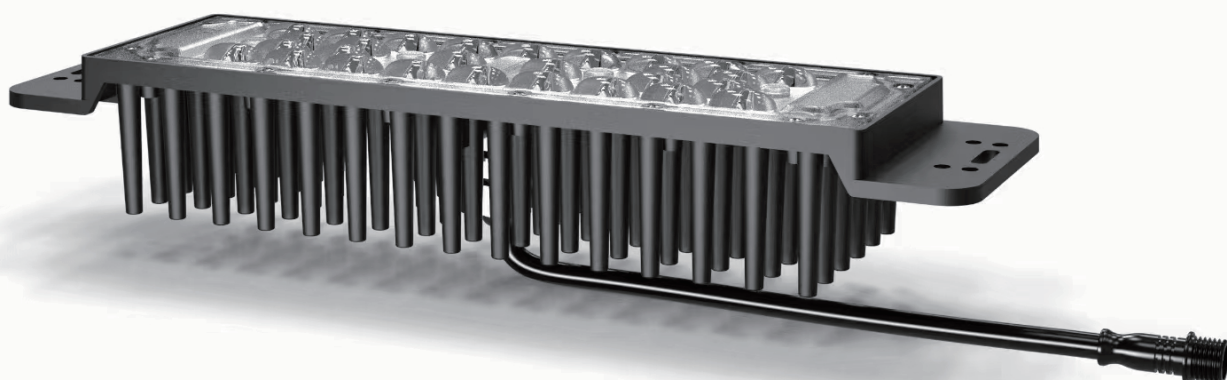
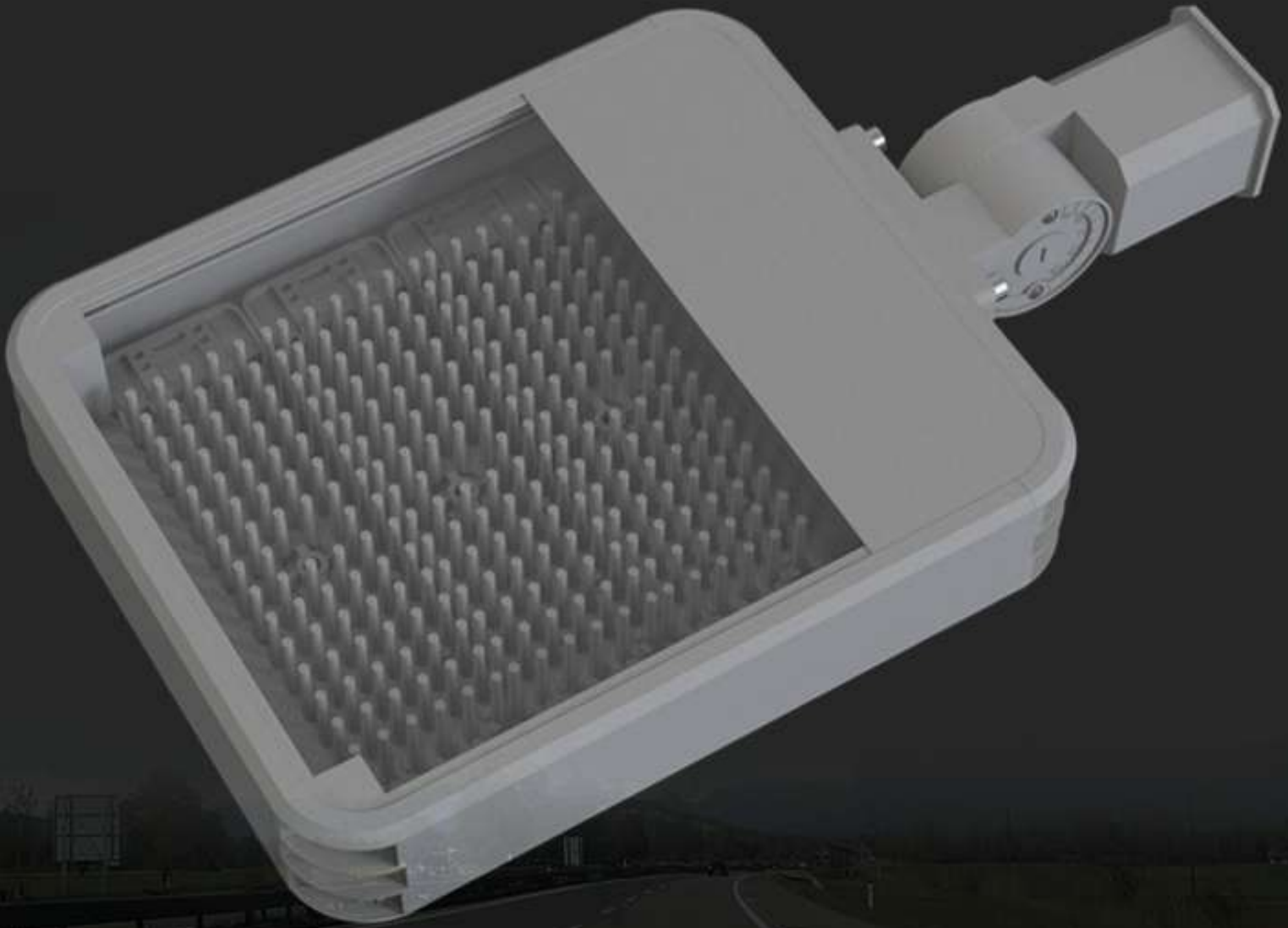
Meanwell/Philips/Inventronics are available;
With 6kv surge protection;
Lifespan>3-5 years warranty.

INSTALLATION HOLDER

Die- casting aluminum holder;
Adjustable angle;
Easy install with Q316 screws.

LED INDEPENDENT MODULE

Columnar heat sink effectively improves heat dissipation performance and extend the service life.

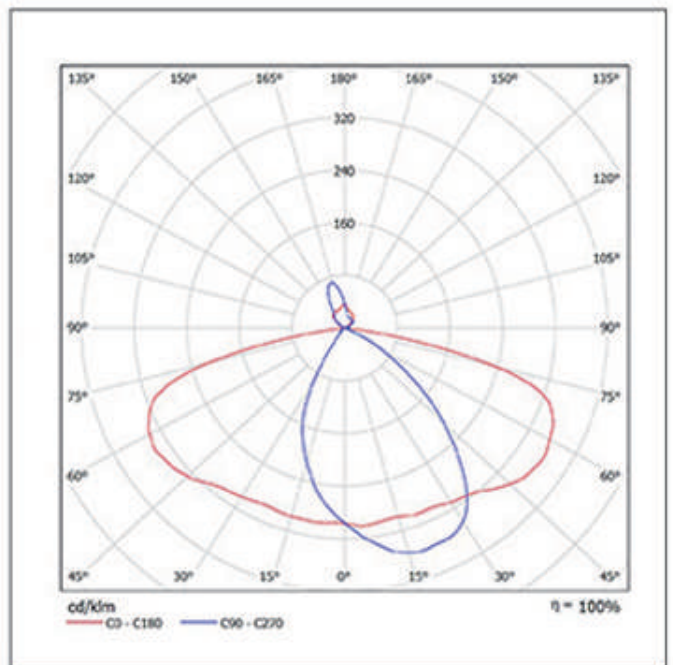
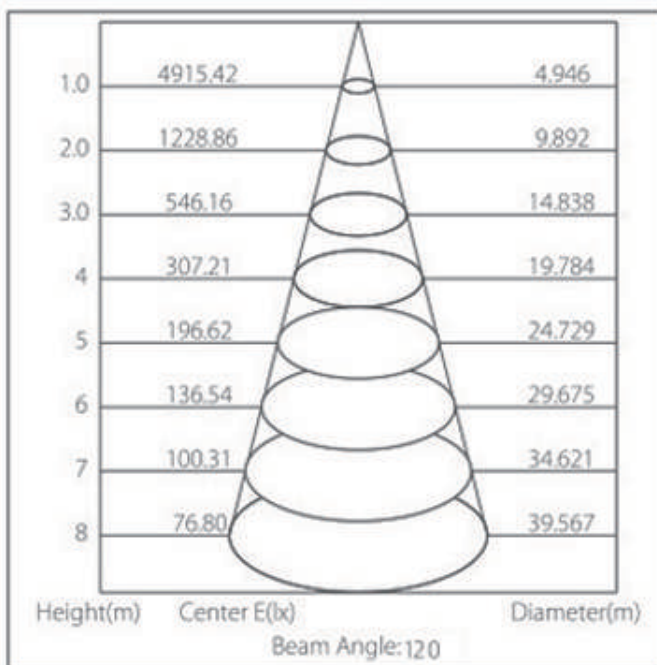
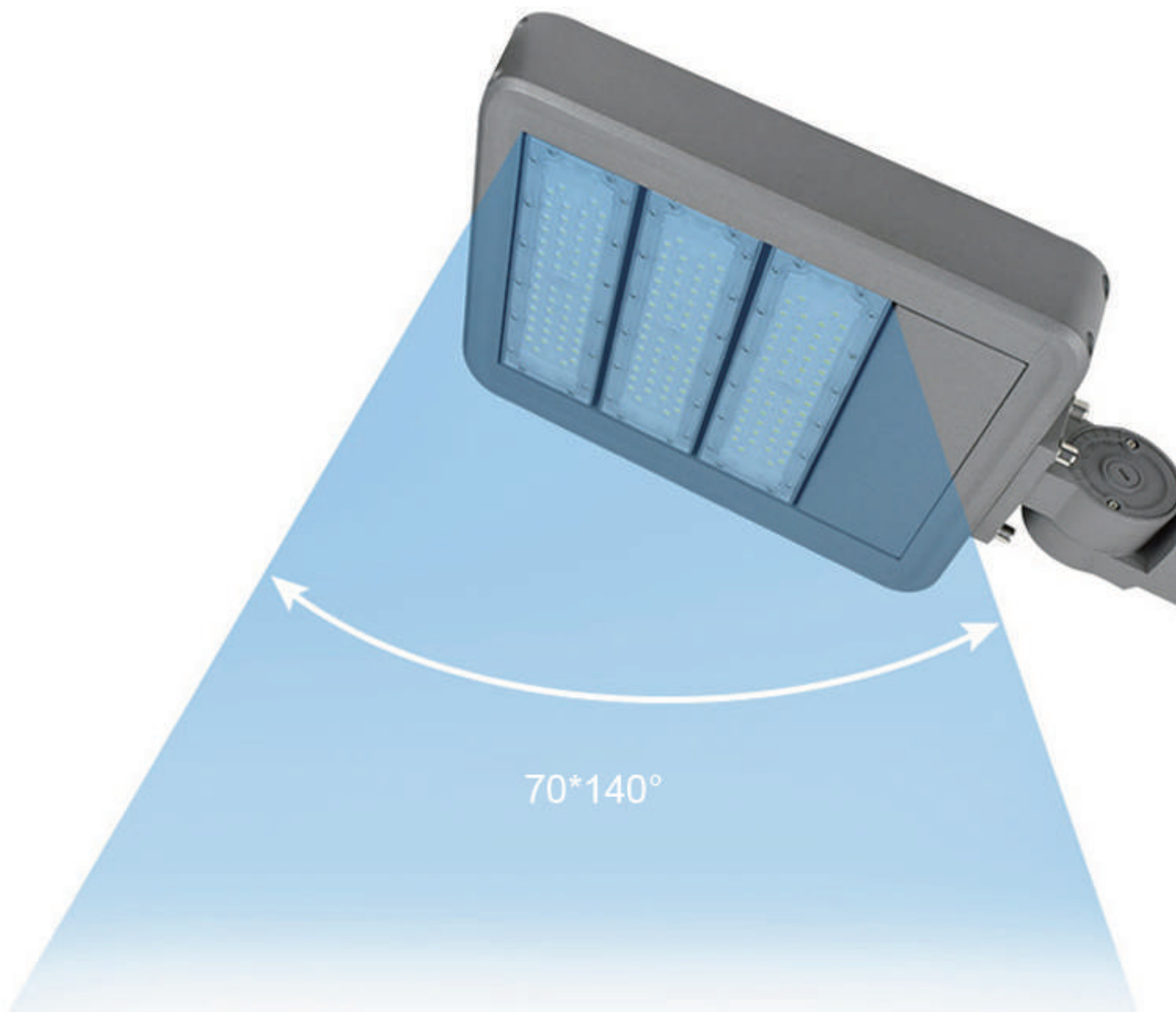


IP65 WATER -PROOFING

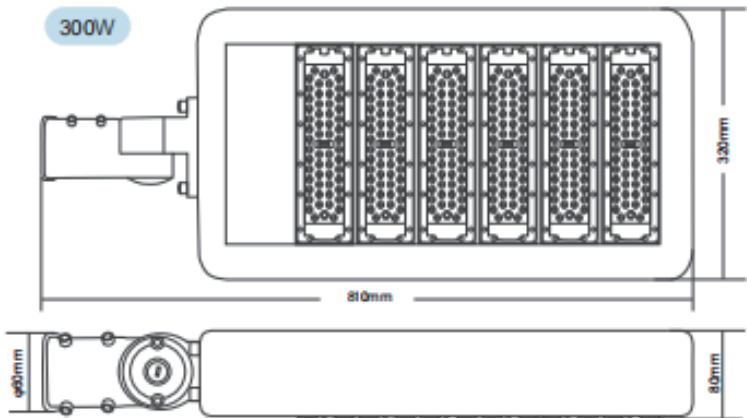
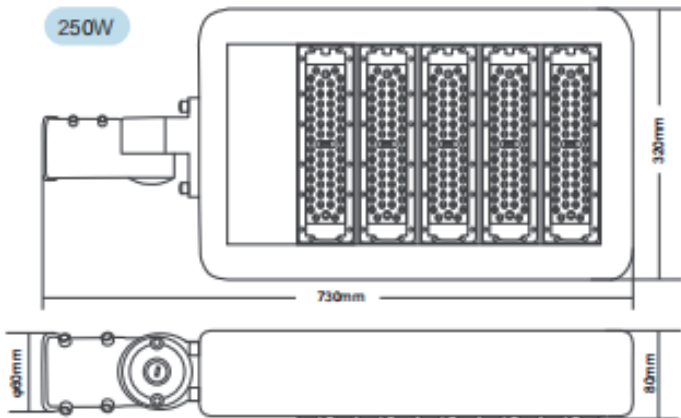
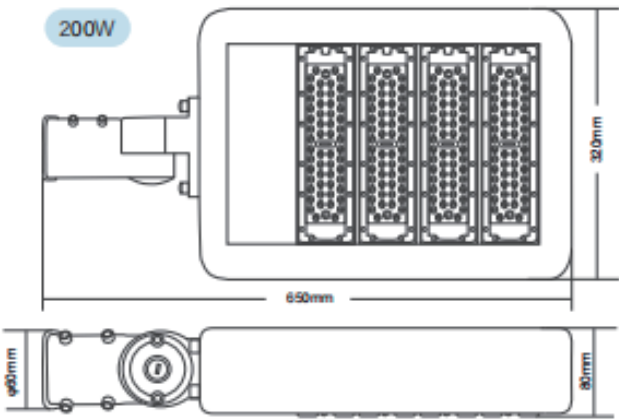
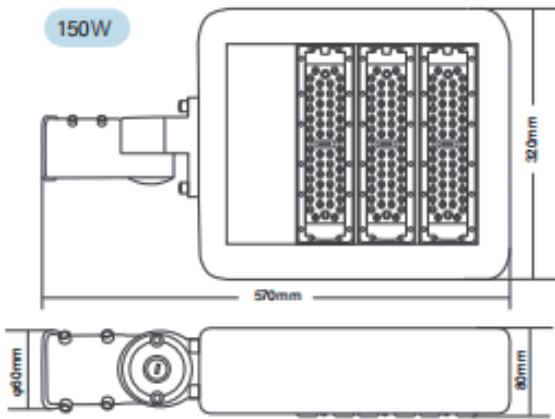
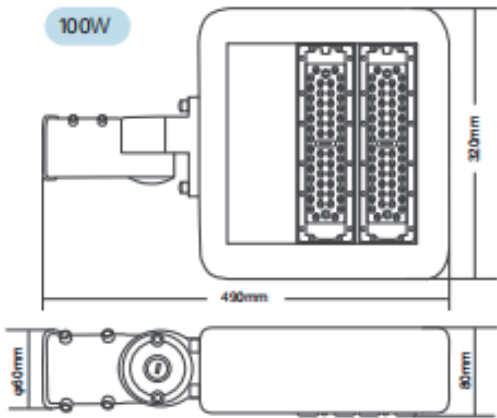
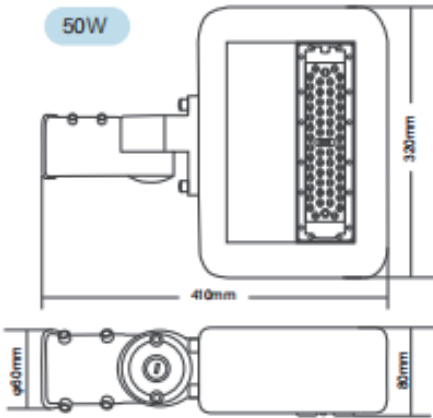
Durable waterproof rubber ring



LIGHT DISTRIBUTION



PRODUCT SIZE



PROJECT CASE

