



# SOLAR STREET LIGHT



# PRODUCT INFORMATION



MODEL	DLPL-RDL002001	WATTAGE	50-300w
BEAM ANGLE	60-120°	MATERIAL	Die-casting aluminum
LUMENS	100-140lm/w	CCT	3500-6500K
IP RATING	IP66	INPUT VOLTAGE	AC85-265V

# DETAILS



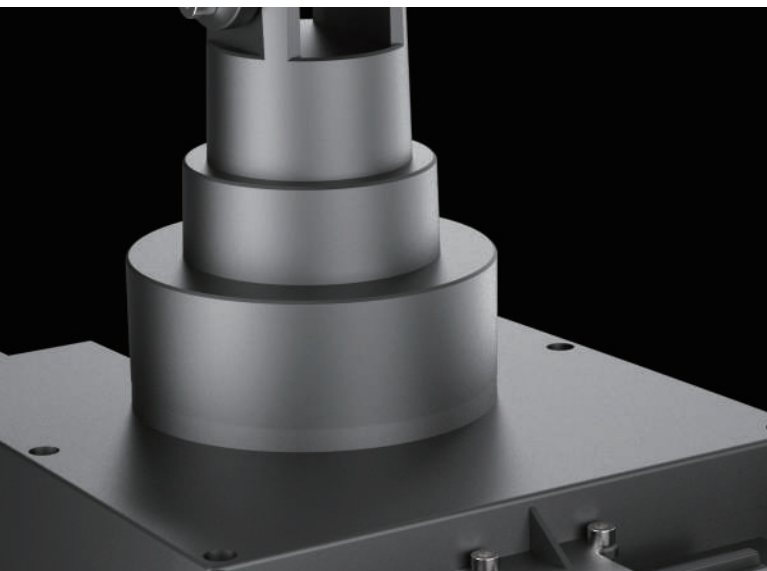
## 170lm/w HIGH LUMEN LED CHIPS

*PC lens + CREE/Bridgelux/Philips chips;  
High transmission PC lens;  
Chips 3030/5050 with high lumen output.*



## FULL ALUMINUM MATERIAL

*Special anti-corrosion ADC12 aluminum,  
long lifespan and non-corrosive.  
IP65 waterproof*



## CONNECTOR

*Rotatable PV connector (right and left) ;  
adjust the PV mounting angle freely.*



## HIGH EFFICIENCY MONO SOLAR PANEL

*Monocrystalline Silicon Solar Panel;  
>21% Photoelectric conversion efficiency;  
25 years lifespan.*

## **MONOCRYSTALLINE SILICON SOLAR PANELS**

*Can also be charged on rainy days with  
high photo-electric conversion rate.*





## ***SUPPORT REMOTE CONTROL***

---

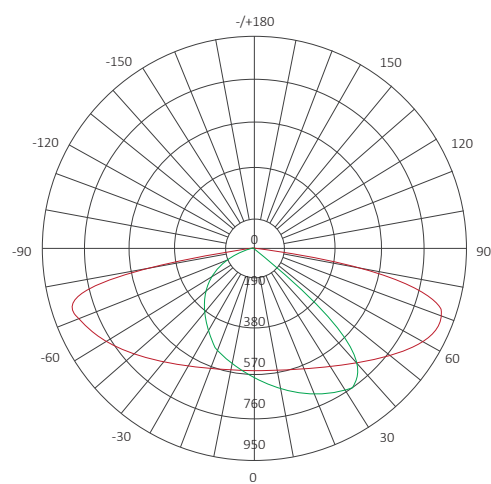
*Equipped with a 433 remote control, which uses a drone remote control solution. The remote control distance can reach 30 meters, which can directly penetrate obstacles. At the same time, it can control multiple lamps.*

*Four lighting modes are available. The mode can be selected according to the seasonal sun.*

*The most suitable mode can be selected according to the seasonal sunshine.*

# LIGHT DISTRIBUTION

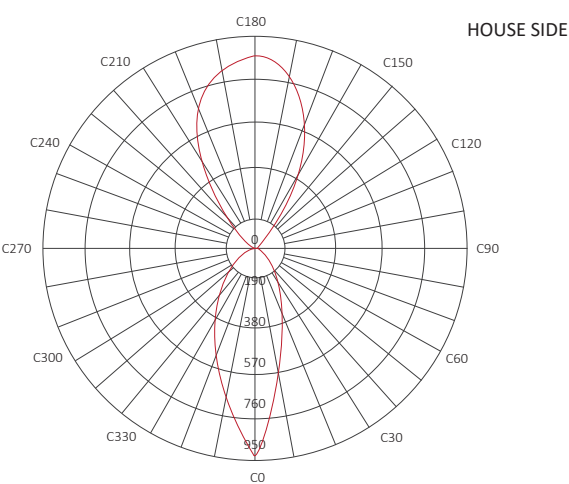
INTENSITY DISTRIBUTION  
DIAGRAM IN C PLANS



Average Beam angle(50%): 118.8 deg

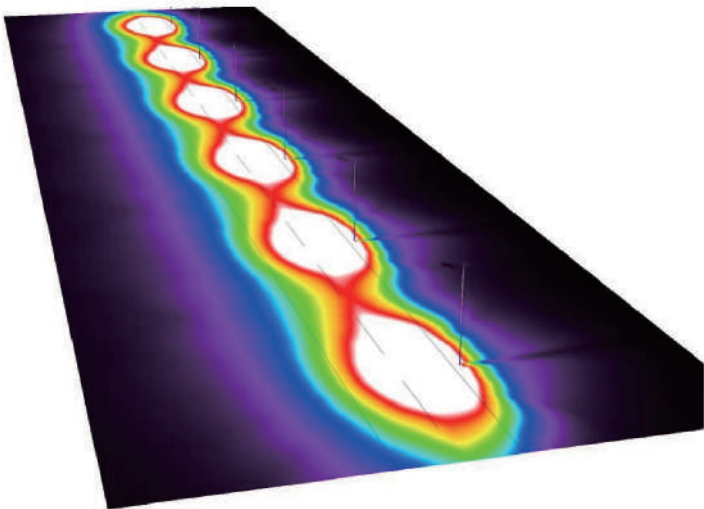
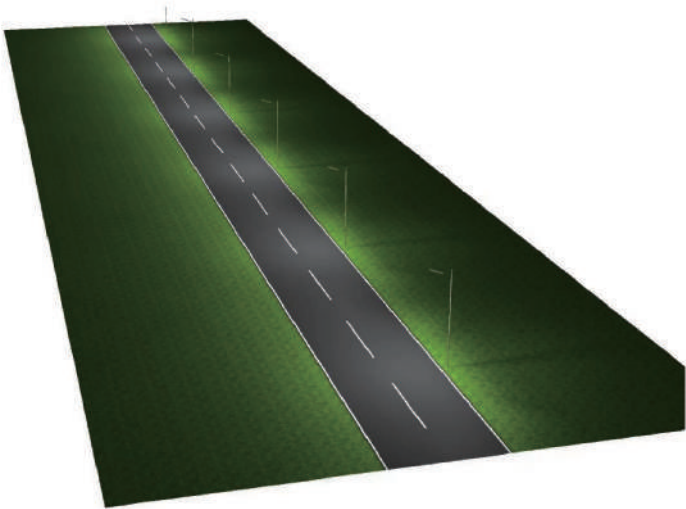
UNIT: cd    — C0/180, 158.4 deg  
              — C90/270, 79.2 deg

MAX INTENSITY CONE SURFACE  
DISTRIBUTION DIAGRAM



MAX @ Y = 67.0 deg

HOUSE SIDE  
STREET SIDE



# ILLUSTRATION OF REMOTE CONTROL

Automatic light control mode: connect the lamp cap with the solar panel, press the [AUTO] auto key, and the light will turn on automatically in the dark, and turn off the light when it is bright. (key with memory mode, only need to set once)

Other remote control modes: the specific functions are shown in the figure below

